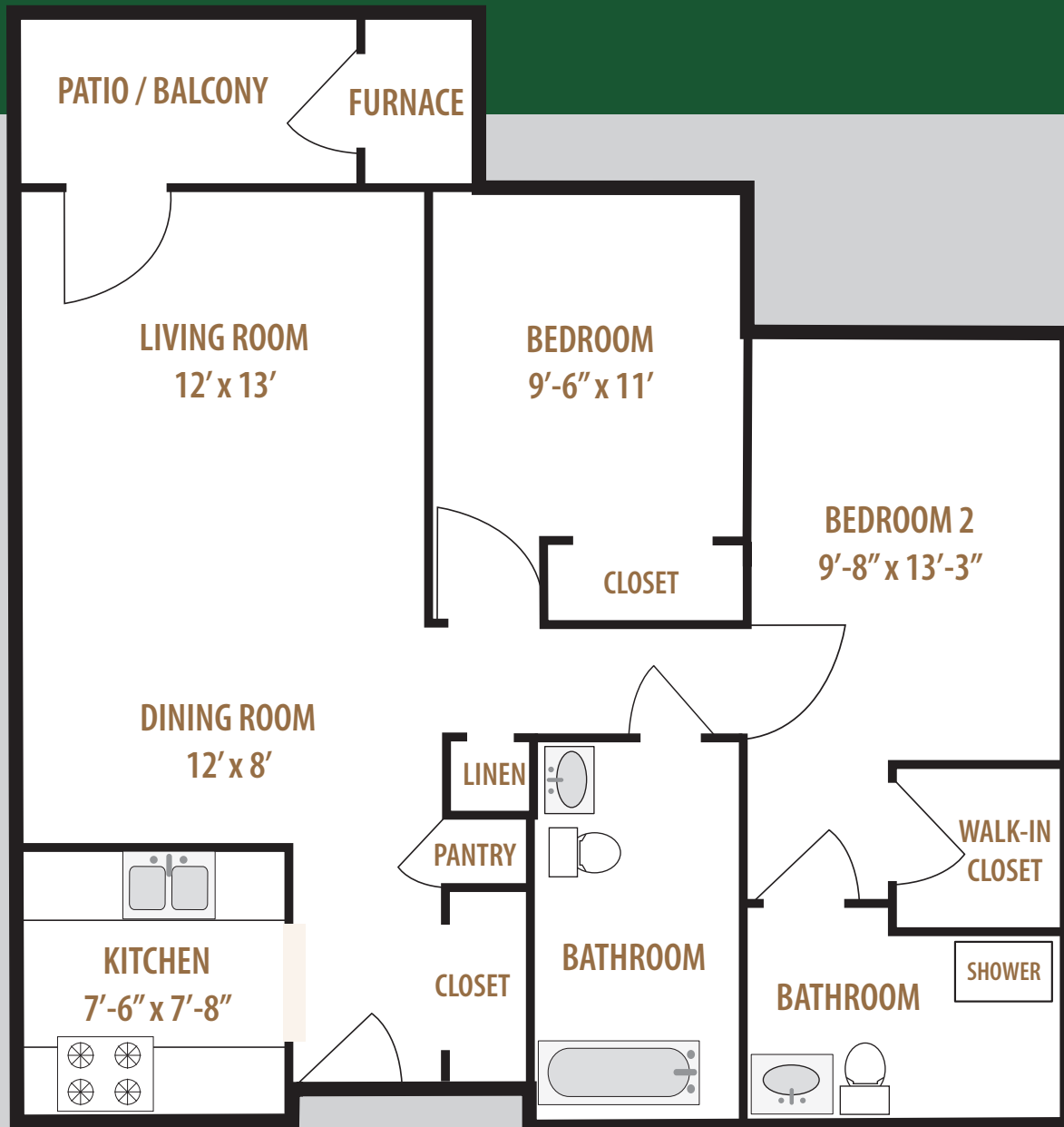




NORTHPOINTE WOODS
A SENIOR LIVING COMMUNITY

INDEPENDENT LIVING | ASSISTED LIVING | MEMORY CARE



925 SQ. FT.

Two Bedroom - Two Bath

Floor plan subject to change. Diagrammatic representation may not indicate actual dimensions.

For more information, please call 269.964.7625



Pet Friendly

Find us on 