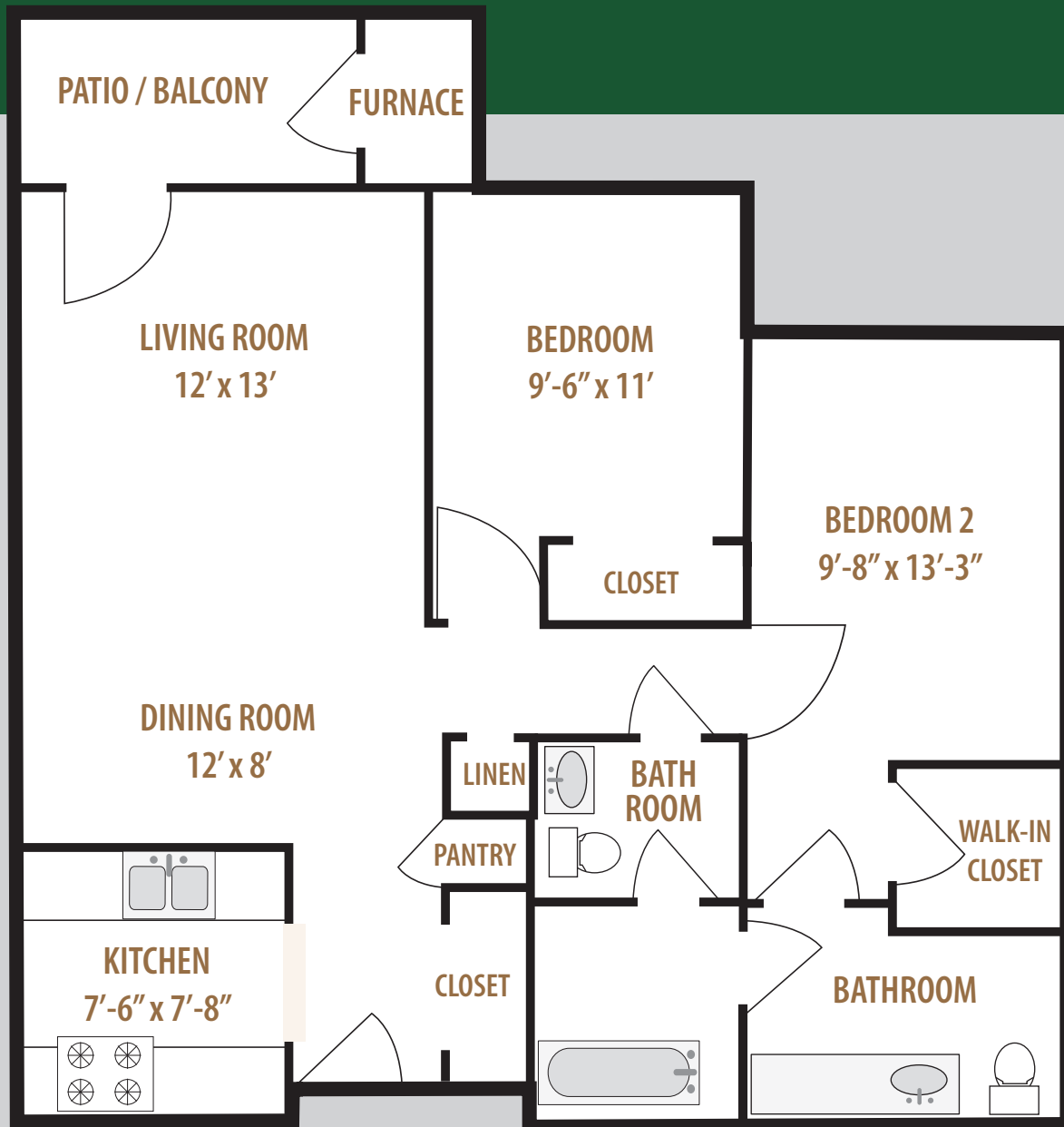




**NORTHPOINTE WOODS**  
A SENIOR LIVING COMMUNITY

**INDEPENDENT LIVING** | ASSISTED LIVING | MEMORY CARE



**925 SQ. FT.**

## Two Bedroom - 1.5 Bath

Floor plan subject to change. Diagrammatic representation may not indicate actual dimensions.

For more information, please call 269.964.7625



Pet Friendly

Find us on